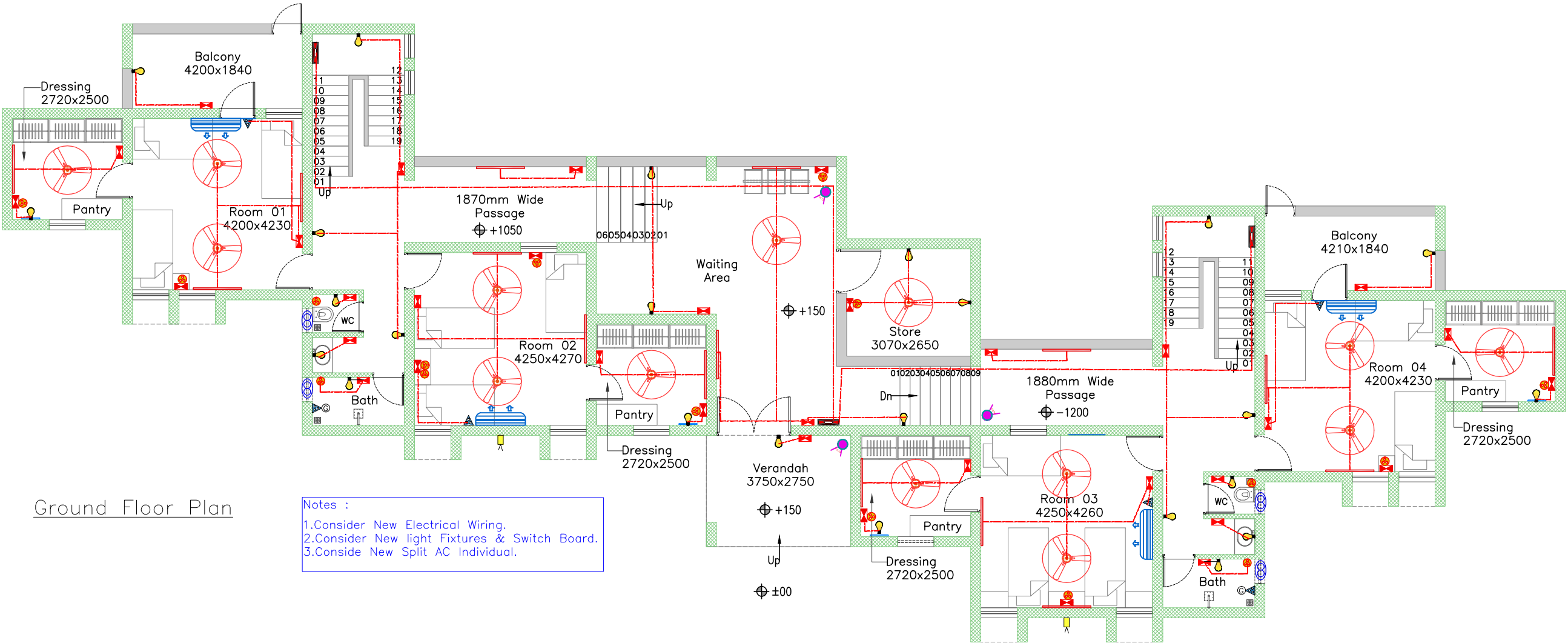


LAST SAVED BY: kparikh 19/5/25 1:00 PM

PLOTTED BY: Khyati M. Parikh

This drawing is property of Mamta Shah & Associates. Without our prior consent, it must be neither copied nor made available to third parties, nor must it be used by the recipient or third parties for the purpose other than for which it is meant.



Ground Floor Plan

- Notes :
- 1.Consider New Electrical Wiring.
  - 2.Consider New light Fixtures & Switch Board.
  - 3.Conside New Split AC Individual.

Legend for Electrical		
Symbol	Wall mounted lighting	Height SB
	Main Switch board	1200
	5 – AMP Plug point	As per Detail
	15 – AMP Plug point	
	5 AMP Plug point With Switch	3’–6”
	TV Plug with HDMI, Data Cable	
	Exhaust fan	Lintel ht.

Legend for Electrical		
Symbol	Wall mounted lighting	Height SB
	Ceiling Fan	
	Wall Mounted Bracket Led light point	
	Wall mounted Led tube light–1.2m	
	Geyser Point	
	External–Wall Mounted Up & Down led light	

ELV Legend	
Symbol	Fixture
	CCTV

Note :  
Consider all Main Switch Boards height 1200mm & 75mm distance away from wall.

SYMBOL	DESCRIPTION
	PVC FAN JUNCTION BOX (SLAB CASTED)
	25MM DIA RIGID PVC CONDUIT (SLAB/WALL/SURFACE)
	MAIN SWITCH BOARD–1200 MM HEIGHT AND 75 MM DISTANCE AWAY FROM WALL
	LIGHTING POINT DISTRIBUTION BOX

Notes :-

RO	19-05-25	Softcopy	GMDC		Tender	KAP
Rev	Date	Issued	Issued to		Issued for	Author

Key Plan:

Project: GMDC Township Development

Drawing: Electrical Layout\_Ground Floor  
Hostel / Old VTC Building  
Sheet 01

Drawing Code: 2307\_ELE\_TD\_22\_R0

Print Size: A2 Scale: 1:80

File Title: 2310\_ELE\_TD\_22\_R0

Project Code: MSA 2310	Project Type: Arc & Int	Location: Ambaji
Print Date: 19-May-25	Drawn By: K Parikh	Checked By: K Patel
		Approved By: M Shah

MAMTA SHAH & ASSOCIATES  
Architects & Interior Designers  
C-12, Chanakyapuri Society,  
Chanakyapuri Char Rasta,  
New Sama Road, Baroda  
Ph. No. +91 265 2712267 / 2710967  
mamta@msain.com / www.msain.com

Client: Gujarat Mineral Development Corporation

